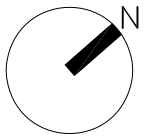
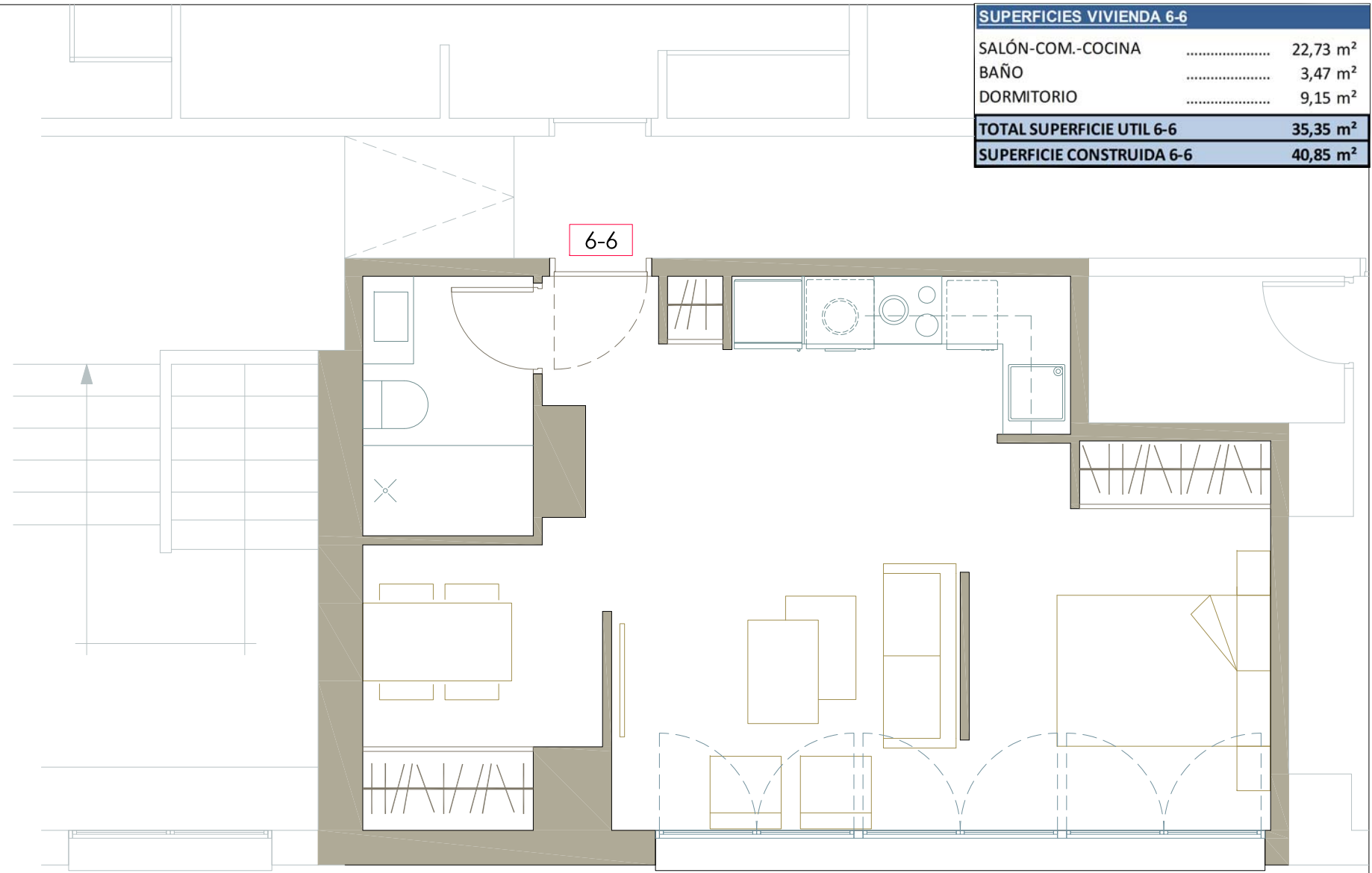
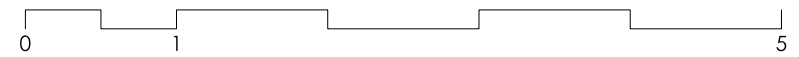


SUPERFICIES VIVIENDA 6-6		
SALÓN-COM.-COCINA	22,73 m ²
BAÑO	3,47 m ²
DORMITORIO	9,15 m ²
TOTAL SUPERFICIE UTIL 6-6		35,35 m²
SUPERFICIE CONSTRUIDA 6-6		40,85 m²



91 209 32 80
 PROMOCIONES@GILMAR.ES



VIVIENDA 6-6